

Family of Christ Christian Preschool

Love and Feelings

Mrs. Dalve - Class 4

Preschool Phone Number: 763.413.5037

We Are Exploring

Letters: R, S

Number: 1-10

Shapes: Heart

Color: Pink

Valentine's Party

Our class Valentine party will be on Wed., Feb.14. Your child may wear pink or red to help celebrate! There are 19 students in our class. If you would like to send in Valentines, please send one for each student. No need to write each child's name on the Valentine. That way, your child is able to drop one into each bag without worrying about whom it is for. However, it is a great opportunity for your child to practice writing his/her name on the cards. Try to write only a couple at a time so they don't become frustrated. Thank you!

Jesus Time

Jesus Feeds 5000 People

Jesus performed an astonishing miracle when He took a boy's lunch and provided food for five thousand people! Was this miracle a one-time demonstration of God's care for His people? Or does God perform similar miracles in caring for us each day?

Jesus Blesses the Children

The children in the story probably felt sad, and unimportant when the disciples told them to go away. The truth is no matter how WE feel, Jesus loves us, and we are important to Him. What an encouraging thought to know that Jesus' love is not dependent on our feelings! Jesus showed His love for us as He suffered, died and rose again so that we can be with him eternally. Praise God!

Snack Prayer

(Mary Had a Little Lamb)
Thank you, God, for our food,
for our food, for our food.

Thank you, God for our food.
We thank you God.
Amen



Mark Your Calendar

Feb. 5- Registration and Open House 7pm

Feb. 7 - Chapel

Feb. 11- Preschool Sunday

Feb. 14- Valentine Party

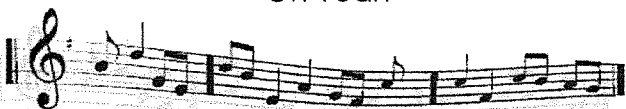
No School Feb. 19-20

Feb. 27- Family Fun Night (more info to come)

Songs

Jesus' Love Is A Bubbling Over

Jesus' Love Is a bubbling over
Jesus' Love Is a bubbling over
Jesus' love is bubbling over
Oh Yeah



Peek in the Classroom

Dramatic Play: Hospital

Art Table: Valentine Bags/ Handprint Cards

Easel: Hearts/ Feelings Faces

Science: Volcanos/ Stethoscopes

Sensory Table: Sand/ Playdough

Sensory Tub: Stringing Necklaces